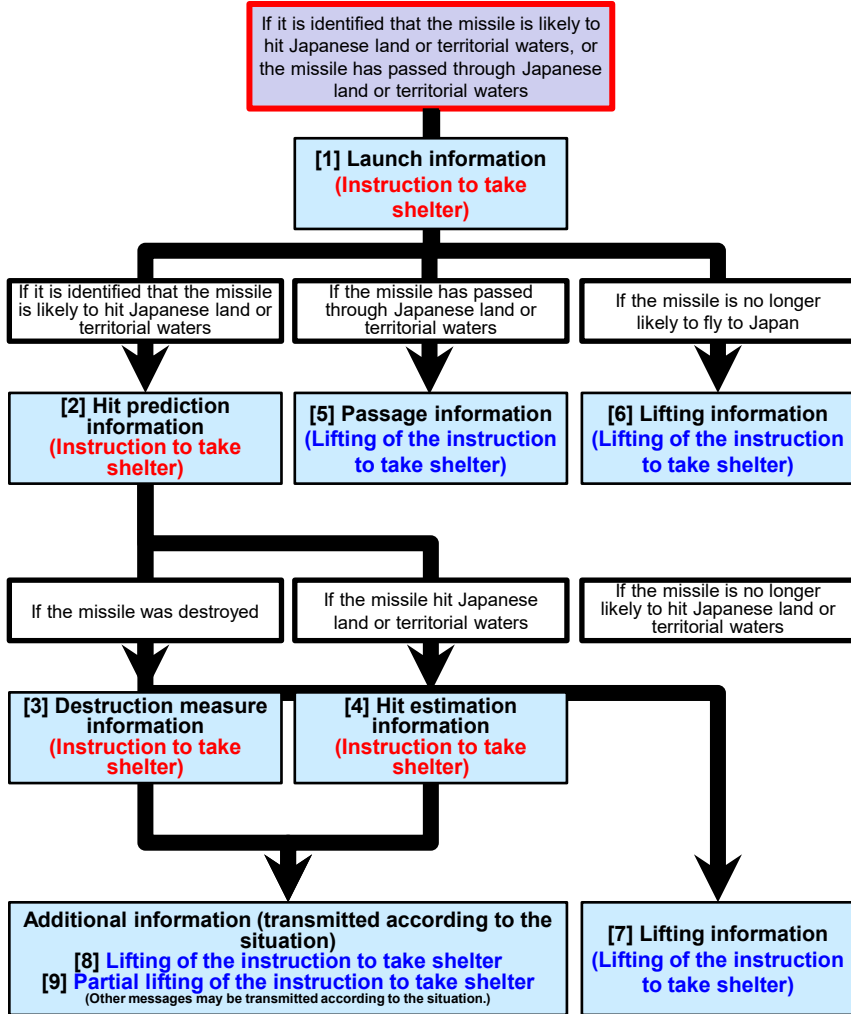


J-ALERT Message

Information is transmitted using J-ALERT and Em-Net based on information transmission from the Ministry of Defense.

Partially revised in March 2026



	Category		J-ALERT Message
	Title	Content	
[1]	Launch information	Instruction to take shelter	Missile launch. Missile launch. North Korea appears to have launched a missile. Take shelter in a sturdy building or underground.
[2]	Hit prediction information	Instruction to take shelter	Evacuate immediately. Evacuate immediately. Take shelter in a building or underground immediately. A missile will possibly hit the area around XX Prefecture at around X:XX. Take shelter immediately.
[3]	Destruction measure information	Instruction to take shelter	The earlier missile was destroyed by interception. Missile fragments may fall. Wait for more information and do not leave the shelter.
[4]	Hit estimation information	Instruction to take shelter	Missile impact. Missile impact. A missile has possibly hit the area around XX City, XX Prefecture at around X:XX. Wait for more information and do not leave the shelter.
[5]	Passage information	Lifting of the instruction to take shelter	Missile has passed. Missile has passed. The missile has possibly passed from around XX Prefecture to XX (name of a sea area) at around X:XX. The instruction to take shelter is lifted. If you find any suspicious objects, do NOT approach, and report it to the police or fire department immediately.
[6]	Lifting information	Lifting of the instruction to take shelter	The earlier missile is not likely to fly to Japan. The instruction to take shelter is lifted.
[7]	Lifting information	Lifting of the instruction to take shelter	The earlier missile is not likely to hit Japan. The instruction to take shelter is lifted.
[8]	Additional information	Lifting of the instruction to take shelter	The instruction to take shelter is lifted. If you find any suspicious objects, do NOT approach, and report it to the police or fire department immediately.
[9]	Additional information	Partial lifting of the instruction to take shelter	

- Since messages are sent according to the situation, all messages above are not necessarily sent.
- The messages may change according to the situation.

[8] and [9] send the same J-ALERT message, but they cover different areas.
[8] is a message sent when lifting the instruction to take shelter that was given by [3] or [4] for all of the targeted areas.
[9] is a message sent when lifting the instruction to take shelter that was given by [3] or [4] for a part of the targeted areas.